

# The Bell



P.O. BOX 1191

ISSAQUAH WA 98027

The monthly newsletter of The Community Church of Issaquah April 2015

## A Word from the Pastor

“And very early on the first day of the week, when the sun had risen, they went to the tomb. They had been saying to one another, ‘Who will roll away the stone for us from the entrance to the tomb?’ When they looked up, they saw that the stone, which was very large, had already been rolled back. As they entered the tomb, they saw a young man, dressed in a white robe, sitting on the right side; and they were alarmed. But he said to them, ‘Do not be alarmed; you are looking for Jesus of Nazareth, who was crucified. He has been raised; he is not here...’”

– Mark 16:2-6

When Mary Magdalene, Mary the mother of James, and Salome came to anoint Jesus’ body on that Easter morning long ago, they found the stone rolled away from the grave. He had risen! And the joy of that resurrection made such an impact upon the disciples that they changed from a scared and defeated group of women and fishermen to a dynamic and courageous band of followers who carried the gospel message to the ends of their world, even in the midst of threats of torture and death.

What would have happened, though, had the stone not been rolled away? Our Scripture tells us the women were anxious

about this and asked each other, “Who will roll the stone away from the entrance of the tomb?” What would have happened? Christ could still have been raised from the dead, and perhaps he could have even left the tomb in the same miraculous way that he was reported to have later entered and left a locked room where the disciples were meeting. The only difference would have been that the women would not have been able to see that the resurrection had occurred, had the stone remained in place. The most important event in history could have occurred without them knowing the difference, because of a large immovable stone blocking their access to where Jesus had been previously laid.

Many people today are shielded from receiving the full joy of the Resurrection because of large immovable stones blocking their view of what has occurred through Jesus Christ.

For some, the stone which blocks them from seeing the reality of the resurrection is the stone of cynicism and despair. “I refuse to trust anything I can’t see for myself!” What gives a person such an attitude? I think it’s fear—fear of latching onto a hope and then having it fail them. For the cynic

the most frightening thing about the Resurrection is that it calls them to hope, and where there is hope there can be disappointment. There are many people in this world who have allowed themselves to be shut off from the hope of the Resurrection by the stone of despair. Don't you be one of them!

Another stone which sometimes gets in the way, is the narrowness of some of us already in the church! Some of us mistake *our style* of Christianity for Christianity; and the religious forms we have set up and are comfortable with, with faith in God. This narrowness can be a stone, blocking some people from the Resurrection. In fact, sometimes the biggest "stones" keeping people from seeing the glory of the Resurrection, are the supposed believers who can't get their prejudice and pettiness out of the way long enough to let people see Christ. Let's not be a stone blocking people's view of the resurrection. We need to say to them the simple message of the angel: "Do not be alarmed; you are looking for Jesus of Nazareth, who was crucified. He has been raised...!"

A third stone which blocks people's view of the Resurrection is the stone of self. You can't see beyond your own problems. And those problems always look so huge because they are so close to you. One thing I am always amazed about living

here in the Northwest, after having been raised in Kansas, is how small a hill it takes to block your view of a huge mountain. Mount Rainier is absolutely massive. But it can be blocked from view by much smaller foothills which are close to you. We can often let our small problems block our view of a great God, just like foothills can block our view of a great mountain.

Do not let the stone of self block your view of the resurrection. If you do, it will also block your road back to life.

Each of these stones is exceedingly large, and the people who have these stones blocking their path know they are too large to move on their own. Like the women on that first Easter morning, they anxiously question, "Who will roll away the stone?"

The women had gone to the tomb thinking they would have to attempt to move the stone themselves, but they arrived and found that God had miraculously moved the stone for them. Even so, if we make our move of faith and open ourselves up for what God might do, he will roll away that stone which stands in between us and a life of hope. Only when we let God do that can we truly experience what it means that Christ has risen!

-Pastor Keith Madsen

"Easter says you can put truth in a grave, but it won't stay there."

~ Clarence W. Hall



## America for Christ Offering

Thank you to all who contributed to the America for Christ Offering. A total of \$660 was collected.

## Men's Winter Clothing Drive

Thank you to all who participated in the Men's Winter Clothing Drive. This drive benefitted Seattle's Union Gospel Mission and the Issaquah Food & Clothing Bank. A total of 24

1/2 barrels of clothing were collected, of that CCI contributed about 1 1/2 barrels.

Some dialogue agreements (edited and adapted to fit), shared by Bob Sittig, Association Chair, Evergreen Association.

- **Listen, Don't Reload!** - We can be guilty of thinking about what we want to say next in a conversation, before the other person has finished making their point. If we don't hear that person through, we may be responding to something very different than what they actually said.
- **Suspend Assumptions**—Let go of preconceived ideas about people, ideas, events, and other things. Some of our assumptions may not apply to the current situation. How do you flip that switch off? It can only happen with intention.
- **Attribute Positive Intent**—Start out by assuming the basic intent of others is trying to make the world better. By doing this, we adopt a completely different attitude about our conversation than when we feel it is adversarial. We may still disagree, but find that our motives are the same or similar. We need to believe in the goodness of others.
- **Lead with Your "And", Not Your "But"** - The word "but" is an eraser. When you reply with "Yes, but . . ." to someone, you are negating whatever they just said. That may not be your intention, but that is what is heard by others. ['But' does not have to be spoken to be heard, body language can speak volumes.] When you say "Yes, and . . ." you are acknowledging what they have said and wishing to augment their thought with one of your own. That is heard very differently than "but".

These suggestions are easy to understand "and" hard to practice all the time. "I think God wants us to be nice to each other."

## April Church Events

### *Sharing the Adventure Fellowship*

Plan on joining us for our upcoming Sharing the Adventure fellowship sessions. We meet here at the church from 12:00-1:30 pm. We will have a potluck meal, prayer time, sing some hymns or choruses, and have a short program. Please bring sandwiches, soup or a salad to share. Here is what is scheduled for the next two sessions:

April 1st—Pastor Keith will address some of the efforts contemporary atheists have made to debunk the stories of Christ's death and resurrection, and he will share why he believes we can rely on the authenticity of these events vital to our faith.

April 15<sup>th</sup>—Sharing our talents. Do you paint, work with wood or some other artistic craft? This will be your opportunity to share it with your church family!

What other experiences would you like to have us schedule for future Wednesdays?

### *Board Meeting*

Our monthly Board meeting is scheduled for Sunday, April 26<sup>th</sup>, shortly after worship. Board members please plan to attend.

### *Adult Forum*

We are investigating some of the prophecies of Christ's second coming and the end times. We are having good attendance, all are invited to join us. The Forum meets Sundays at 10:00 a.m.

## Trusting the Shepherd

In *The Glory of God's Will* (Back to the Bible Publishing), Elisabeth Elliot writes about watching sheep being dipped into antiseptic troughs. Although this was done for their good, the sheep struggled mightily; dogs had to keep them in place.

Certain life experiences made Elliot sympathetic to those sheep. "I couldn't figure out any reason for the treatment I was getting from the Shepherd I trusted," she writes. "As I watched the struggling sheep, I thought, 'If only there was some way to explain to these poor animals what was being done to them.' Such knowledge is too wonderful for them. It is high. They cannot attain it." (See Psalm 139:6).

## Other Church News

### *Our Building*

This month we expect to resolve the final Fire Dept issue and see progress toward installation of our bookshelves/cabinetry by Grette Custom Woodworking.

### *Quarterly Meeting*

Because of schedule conflicts, our April quarterly meeting will be pushed to a date in May. This meeting will focus on missions. Come prepared to talk about what you would like to see CCI focus on in terms of missions, whether local, regional, national, or international.

### *Pastoral Search Committee*

The Pastoral Search Committee (PSC) has begun its work, having had two meetings with a third scheduled for April 3rd. The PSC is asking for congregational input as to what they would like to see in a new pastor. Comments may be given to any of the PSC members: Mary Cline, Duane Bowen, Bessie Burton, Juanita Frye, Woody Ross, and Charlotte Scherer.

## The Greater Church Community

### *Good Friday Online Worship Service—Seattle First Baptist*

Friday, April 3<sup>rd</sup> Online Good Friday worship: *O Sacred Head*, Good Friday reflections and music online at [www.seattlefirstbaptist.org](http://www.seattlefirstbaptist.org).

### *Easter 'Early Morning' Service*

Sunday, April 5<sup>th</sup>, 8:00 AM at St. Ignatius Chapel, Seattle University Campus. "Peace be with You", John 20:19-29. Hosted by Japanese Baptist Church and Seattle First Baptist Church.

### *Fiesta!!*

Saturday, May 2<sup>nd</sup> Ebenezer Fellowship (meeting at Burien Community Church), 16241 19th Avenue SW; Burien. Tickets: \$25 per person, available from Evergreen Association. This is a fundraising event of the Hispanic Caucus for benefit of Ebenezer Fellowship and Evergreen Association.

### *Take your Pastor to the Ballgame!*

Monday, June 1<sup>st</sup> Seattle Mariners vs NY Yankees. Tickets: \$21 each. Section 331, Rows 14, 15, & 16. Order your tickets through Clem at Evergreen Association.

## Food for Thought

### *Human Communication is a Frail Thing*

How about a pop quiz? Since I work in education I thought it would be a fun thing to do.

So, here is question number one: looking back over your life, make an estimate of the number of times you have been misunderstood by others. Give yourself some time and use your fingers or a calculator to come up with a number.

Now, question number two: again, looking back over your life, make an estimate of the number of times you have misunderstood someone else.

There are no right answers. One thing I am sure about is this: human communication is a frail thing.

In my work as a school counselor I see the truth of this on a daily basis. Students frequently say that their – (fill in the blank) – teacher/parent/friend is not listening to them. They are not being heard. And then I ask my counselor questions: tell me more about that...what exactly did he/she say...start at the beginning and I give them an opening phrase to get things started. Two of my favorites are “I woke up this morning and I...” or “I was born in ....” I love a long story and I especially like it when the person goes way, way back to the beginning.

But, here we are in the present with our problem of the day: how do we figure out this tough nut to crack that we call human communication? I wish I had an easy answer. But, all I have are challenging things to try such as the St. Francis prayer for peace that says, in part: “Grant that I may not so much seek to be consoled as to console; to be understood as to understand”. Maybe this is where we start the genuine journey: asking our Divine Maker to grant us this ability to understand. Or at least to give us a hint about how to get started. I know that I am definitely going to need some divine intervention. And I also know and believe that although human communication is frail and easily messed up it is worth it to keep trying to make it better.

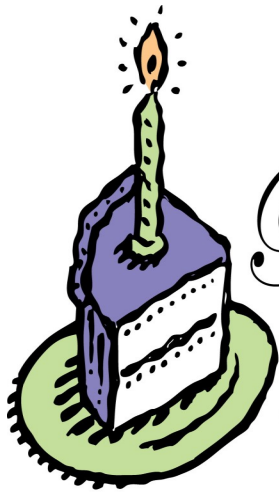
~ Teri Hansen

“Christendom has had a series of revolutions, and in each . . . has died. Christianity has died many times and risen again; for it had a God who knew the way out of the grave.”

~ G.K. Chesterton, *The Everlasting Man*

## Special Dates in April

- Holy Week - 03/29—04/04
- Maundy/Holy Thursday - Thursday, 04/02
- Good Friday - Friday, 04/03
- Holy Saturday - Saturday, 04/04
- Easter Sunday - Sunday, 04/05
- National Volunteer Week - 04/12-04/18
- Admin Professionals Day - Wednesday, 04/22
- Earth Day - Wednesday, 04/22



## *Birthday Blessings*

**TO...**

- 4 Earle Jones**
- 6 Sherry Pepke**
- 7 Austyn Little**
- 12 Elvira Lindsay**
- 18 Anita Karr**

## April 2015 at CCI

- Sharing the Adventure - 04/01
- Sharing the Adventure - 04/15
- Bell Article Deadline - 04/24
- Board Meeting - 04/26

# LONG TERM PRAYER LIST

Perhaps you would like to add these church family members to your prayer concerns:

1. **Craig & Karyn Akishin** - *at home*
2. **Marge Armstrong**  
*16300 St Hwy 305, #37  
Poulsbo, WA 98370*
3. **Sylvia Coulton** - *at son Peter's*  
*8912 Wildwood Ave SW  
Lakewood, WA 98498*
4. **Daisy Cox** - *at home*
5. **Jane Forbes**  
*Kirkland, WA*
6. **Don & Alice Good**  
*Bellevue, WA*
7. **Geri Hardisty**  
*Premier Adult Care  
Sammamish, WA*
8. **Elvira Lindsay** - *at Aegis*
9. **Martha Nordhagen**  
*Adams House, Oregon*
10. **Sylvia Olsson** (425) 793-5488  
*Chateau Valley Ctr.  
4450 Davis Ave S.  
Renton, WA 98055*
11. **Joe Shultice**  
*219 Cedar Ave S.  
North Bend, WA 98045*
12. **Dody Tweeddale**  
*Cascades Adult Family Home, Bellevue*
13. **Cherie Vivolo** - *at home*